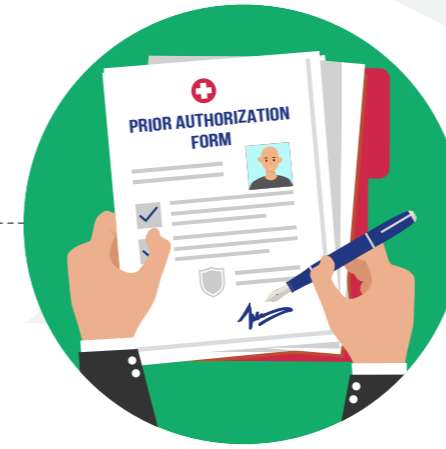




UTILIZATION MANAGEMENT IN ONCOLOGY

**CANCER PATIENTS NEED PRECISE,
INNOVATIVE TREATMENTS TO HELP
THEM BATTLE THEIR DISEASE.**

**But sometimes excessive
insurance paperwork** prevents
cancer patients from being at
the center of treatment decisions.



PRIOR AUTHORIZATION

delays timely treatment.
Patients lose precious time
while waiting for approval.



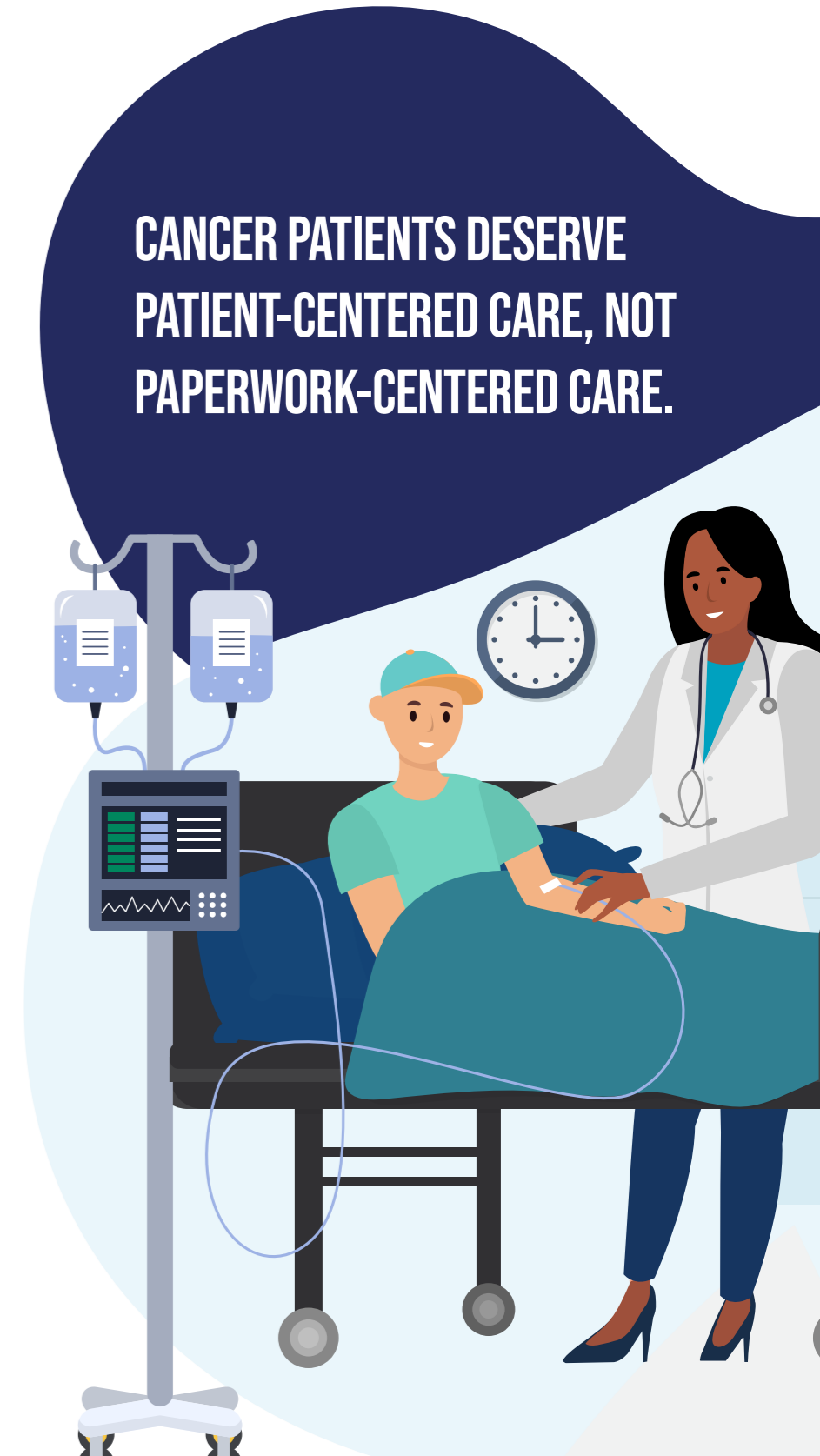
STEP THERAPY

forces cancer patients
to fail insurer-approved
treatments first. While
patients try those
medications, their
cancer may worsen.



NON-MEDICAL SWITCHING

pushes stable patients off
their treatment and toward
options that are more
profitable for the insurer.



**CANCER PATIENTS DESERVE
PATIENT-CENTERED CARE, NOT
PAPERWORK-CENTERED CARE.**